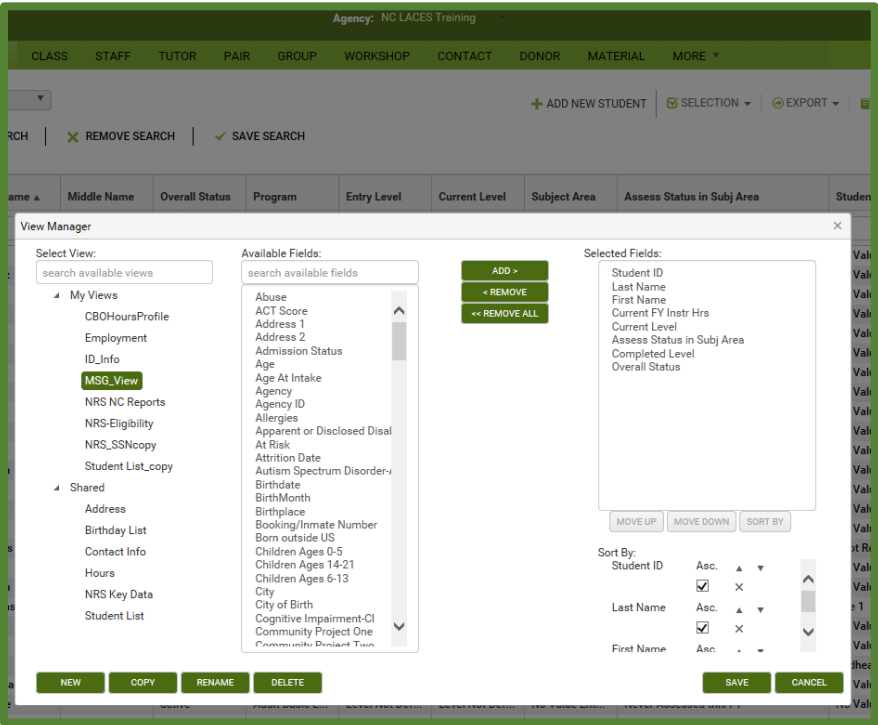


Under the STUDENT tab in LACES, you will need to create view. Click on the down arrow within the View window and select Open View Manager.



Within View Manager, select New. Enter a name for your view (i.e. MSG_View).
Select the following fields from Available Fields in this order: Student ID, Last Name, First Name, Current FY Inst Hrs, Entry Level, Assess Status in Subj Area, Completed Level, and Overall Status.
Click Save.

MSG_View will have all selected fields. Export the CSV file to Excel. Select all the data in the CSV file, copy and save in the **LACES_Export** sheet in the **MSGCalculationsLACES** Excel document.

Agency: NC LACES Training

DASHBOARD STUDENT CLASS STAFF TUTOR PAIR GROUP WORKSHOP CONTACT DONOR MATERIAL MORE

View: MSG_View

+ ADD NEW STUDENT | ✓ SELECTION | 🔄 EXPORT | 📄 REPORTS | ☰ MORE

86 of 84 | + ADD SEARCH | ✗ REMOVE SEARCH | ✓ SAVE SEARCH

> Searches Help <

<input type="checkbox"/>	Student ID ▲	Last Name ▲	First Name ▲	Current FY In...	Current Level	Assess Statu...	Completed L...	Overall Status	
<input type="checkbox"/>	26			3.5	Level Not Def...	Never Assess...	No	active	👁
<input type="checkbox"/>	26			9	Level Not Def...	Never Assess...	No	active	👁
<input type="checkbox"/>	26			0	Level Not Def...	Never Assess...	No	active	👁
<input type="checkbox"/>	26			0	Level Not Def...	Never Assess...	No	active	👁
<input type="checkbox"/>	26			0	Level Not Def...	Never Assess...	No	active	👁
<input type="checkbox"/>	26			0	Level Not Def...	Never Assess...	No	active	👁
<input type="checkbox"/>	26			0	Level Not Def...	Never Assess...	No	active	👁
<input type="checkbox"/>	26			0	Level Not Def...	Never Assess...	No	active	👁
<input type="checkbox"/>	26			0	Level Not Def...	Never Assess...	No	active	👁
<input type="checkbox"/>	26			0	Level Not Def...	Never Assess...	No	active	👁
<input type="checkbox"/>	26			4	Level Not Def...	Never Assess...	No	active	👁
<input type="checkbox"/>	26			0	Level Not Def...	Never Assess...	No	Left	👁
<input type="checkbox"/>	26			0	Level Not Def...	Never Assess...	No	active	👁
<input type="checkbox"/>	26			0	Level Not Def...	Never Assess...	No	active	👁
<input type="checkbox"/>	26			0	Level Not Def...	Never Assess...	No	active	👁

The EDIT_for_MSG sheet in the Excel document will have the following columns and their formulas:

- **Enrolled (I):** $=IF((H3="active"),1,0)$
Column H, Overall Status = active in the FY
- **Post Ind (J):** $=IF((F3="Assessed 2+ this FY"), 1,0)$
Column F, Assess Status in Subject Field = Assessed 2+ this FY
- **Compl Level (L):** $=IF(G3=TRUE,1,0)$
Column G, Completed Level = TRUE
- **Sec Diploma (M):** Self reporting if Secondary Diploma has been received
- **Post Sec (N):** Self reporting if Post-Secondary Diploma has been received
- **MSG:** $=IF(SUM(K3:M3)>=1,1,0)$
SUM (Completed Level, Secondary Diploma, and Post-secondary) $>= 1$, you give the value of 1 for receiving a measurable skill gain and 0 if they haven't.
- **MSG (Sec Diploma, Post Sec not incl.)** $=IF(SUM(K3:K3)>=1,1,0)$
Same as MSG, but doesn't include Sec Diploma, Post Sec
- **Totals:** $=SUM(I3:I28)$
sums the above columns placing a **SUM** at the end of each column.
- **Program Total MSG** $=IF(I29>0,N29/I29,0)$
 $= SUM(MSG)/SUM(Enrolled)$. You want this to be 36% or more for 2016-2017.

MSG by Educational Functioning Level

- **#MSG** $=SUMIF(\$E\$3:\$E\$28,I34,\$N\$3:\$N\$28)$
#Students in this EFL that have a MSG
- **Enrolled** $=SUMIF(\$E\$3:\$E\$28,I34,\$I\$3:\$I\$28)$
#Students enrolled in this EFL
- **MSG** $=IF(N34>0,M34/N34,0)$
EFL Overall MSG
- **Program Negotiated MSG-** the negotiated target for each EFL

Calculating MSG for LACES Users

EDIT_for_MSG

Measurable Skill Gains Calculations						
Enrolled	Post Ind	Compl Level	Sec Diploma 1=Yes 0=No	Post Sec 1=Yes 0=No	MSG	MSG (Sec Diploma, Post Sec not incl.)
=IF((H3="active"),1,0)	=IF((F3="Assess"),1,0)	=IF((G3=TRUE),1,0)	1	1	=IF(SUM(K3:M3)>=1,1,0)	=IF(SUM(K3:K3)>=1,1,0)
=IF((H4="active"),1,0)	=IF((F4="Assess"),1,0)	=IF((G4=TRUE),1,0)	0	0	=IF(SUM(K4:M4)>=1,1,0)	=IF(SUM(K4:K4)>=1,1,0)
=IF((H5="active"),1,0)	=IF((F5="Assess"),1,0)	=IF((G5=TRUE),1,0)	0	0	=IF(SUM(K5:M5)>=1,1,0)	=IF(SUM(K5:K5)>=1,1,0)
=IF((H6="active"),1,0)	=IF((F6="Assess"),1,0)	=IF((G6=TRUE),1,0)	0	0	=IF(SUM(K6:M6)>=1,1,0)	=IF(SUM(K6:K6)>=1,1,0)
=IF((H7="active"),1,0)	=IF((F7="Assess"),1,0)	=IF((G7=TRUE),1,0)	0	0	=IF(SUM(K7:M7)>=1,1,0)	=IF(SUM(K7:K7)>=1,1,0)
=IF((H8="active"),1,0)	=IF((F8="Assess"),1,0)	=IF((G8=TRUE),1,0)	0	0	=IF(SUM(K8:M8)>=1,1,0)	=IF(SUM(K8:K8)>=1,1,0)
=IF((H9="active"),1,0)	=IF((F9="Assess"),1,0)	=IF((G9=TRUE),1,0)	0	0	=IF(SUM(K9:M9)>=1,1,0)	=IF(SUM(K9:K9)>=1,1,0)
=IF((H10="active"),1,0)	=IF((F10="Assess"),1,0)	=IF((G10=TRUE),1,0)	0	0	=IF(SUM(K10:M10)>=1,1,0)	=IF(SUM(K10:K10)>=1,1,0)
=IF((H11="active"),1,0)	=IF((F11="Assess"),1,0)	=IF((G11=TRUE),1,0)	0	0	=IF(SUM(K11:M11)>=1,1,0)	=IF(SUM(K11:K11)>=1,1,0)
=IF((H12="active"),1,0)	=IF((F12="Assess"),1,0)	=IF((G12=TRUE),1,0)	0	0	=IF(SUM(K12:M12)>=1,1,0)	=IF(SUM(K12:K12)>=1,1,0)
=IF((H13="active"),1,0)	=IF((F13="Assess"),1,0)	=IF((G13=TRUE),1,0)	0	0	=IF(SUM(K13:M13)>=1,1,0)	=IF(SUM(K13:K13)>=1,1,0)
=IF((H14="active"),1,0)	=IF((F14="Assess"),1,0)	=IF((G14=TRUE),1,0)	0	0	=IF(SUM(K14:M14)>=1,1,0)	=IF(SUM(K14:K14)>=1,1,0)
=IF((H15="active"),1,0)	=IF((F15="Assess"),1,0)	=IF((G15=TRUE),1,0)	0	0	=IF(SUM(K15:M15)>=1,1,0)	=IF(SUM(K15:K15)>=1,1,0)
=IF((H16="active"),1,0)	=IF((F16="Assess"),1,0)	=IF((G16=TRUE),1,0)	0	0	=IF(SUM(K16:M16)>=1,1,0)	=IF(SUM(K16:K16)>=1,1,0)

Calculating MSG for LACES Users

=SUM(I3:I28)	=SUM(J3:J28)	=SUM(K3:K28)	=SUM(L3:L28)	=SUM(M3:M28)	=SUM(N3:N28)	=SUM(O3:O28)	
			Program Total MSG		=IF(I29>0,N29/I29,0)	=IF(I29>0,O29/I29,0)	
MSG By Educational Functioning Levels							
EFL			# MSG	Enrolled	MSG		Program Negotiated MSG
Beg Lit ABE (ABE L1)			=SUMIF(\$E\$3:\$E\$28,I3)	=SUMIF(\$E\$3:\$E\$28,I3)	=IF(N34>0,M34/N34,0)		0.19
Beg ABE (ABE L2)			=SUMIF(\$E\$3:\$E\$28,I3)	=SUMIF(\$E\$3:\$E\$28,I3)	=IF(N35>0,M35/N35,0)		0.3
Low Int ABE (ABE L3)			=SUMIF(\$E\$3:\$E\$28,I3)	=SUMIF(\$E\$3:\$E\$28,I3)	=IF(N36>0,M36/N36,0)		0.39
High Int ABE (ABE L4)			=SUMIF(\$E\$3:\$E\$28,I3)	=SUMIF(\$E\$3:\$E\$28,I3)	=IF(N37>0,M37/N37,0)		0.4
LAS (ABE L5)			=SUMIF(\$E\$3:\$E\$28,I3)	=SUMIF(\$E\$3:\$E\$28,I3)	=IF(N38>0,M38/N38,0)		0.35
HAS (ABE L6)			=SUMIF(\$E\$3:\$E\$28,I3)	=SUMIF(\$E\$3:\$E\$28,I3)	=IF(N39>0,M39/N39,0)		
Beg Lit ESL (ESL L1)			=SUMIF(\$E\$3:\$E\$28,I4)	=SUMIF(\$E\$3:\$E\$28,I4)	=IF(N40>0,M40/N40,0)		0.4
Low Beg ESL (ESL L2)			=SUMIF(\$E\$3:\$E\$28,I4)	=SUMIF(\$E\$3:\$E\$28,I4)	=IF(N41>0,M41/N41,0)		0.3
High Beg ESL (ESL L3)			=SUMIF(\$E\$3:\$E\$28,I4)	=SUMIF(\$E\$3:\$E\$28,I4)	=IF(N42>0,M42/N42,0)		0.45
Low Int ESL (ESL L4)			=SUMIF(\$E\$3:\$E\$28,I4)	=SUMIF(\$E\$3:\$E\$28,I4)	=IF(N43>0,M43/N43,0)		0.37
High Int ESL (ESL L5)			=SUMIF(\$E\$3:\$E\$28,I4)	=SUMIF(\$E\$3:\$E\$28,I4)	=IF(N44>0,M44/N44,0)		0.32
Adv ESL (ESL L6)			=SUMIF(\$E\$3:\$E\$28,I4)	=SUMIF(\$E\$3:\$E\$28,I4)	=IF(N45>0,M45/N45,0)		0.22
Level Not Defined				=COUNTIF(E3:E28,I4)			

Calculating MSG for LACES Users

LACES Data										MSG_Sample			Measurable Skill Gains Ca				EDIT_for_MSG	
Student ID	Last Name	First Name	Current FY Instr Hrs	Entry Level	Assess Status in Subj Area	Completed Level	Overall Status	Enrolled	Post	Compl Level	Sec Diploma 1=Yes	Post Sec 1=Yes 0=No	MSG	Diploma, Post Sec not incl.)				
262921			73	HAS (ABE L6)	Assessed 2+ this FY	TRUE	active	1	1	0	1	1	1	0				
263782			37	High Beg ESL (ESL L3)	Assessed once this F	FALSE	active	1	0	0	0	0	0	0				
263978			0	Level Not Defined	Never Assessed this F	FALSE	waiting	0	0	0	0	0	0	0				
264746			0	Level Not Defined	Never Assessed this F	FALSE	waiting	0	0	0	0	0	0	0				
264748			46	Low Int ABE (ABE L3)	Assessed 2+ this FY	FALSE	active	1	1	0	0	0	0	0				
265536			56	Low Int ABE (ABE L3)	Assessed 2+ this FY	FALSE	active	1	1	0	0	0	0	0				
269624			0	Level Not Defined	Never Assessed this F	FALSE	prospective	0	0	0	0	0	0	0				
269625			87	Low Int ABE (ABE L3)	Assessed 2+ this FY	TRUE	active	1	1	1	0	0	1	1				
269855			56	LAS (ABE L5)	Assessed 2+ this FY	FALSE	active	1	1	0	0	0	0	0				
269856			48	Low Int ABE (ABE L3)	Assessed 2+ this FY	FALSE	active	1	1	0	0	0	0	0				
269861			69	Beg Lit ABE (ABE L1)	Assessed 2+ this FY	FALSE	active	1	1	0	0	0	0	0				
269862			80	Low Int ABE (ABE L3)	Assessed 2+ this FY	TRUE	active	1	1	1	0	0	1	1				
269864			0	Level Not Defined	Never Assessed this F	FALSE	prospective	0	0	0	0	0	0	0				
269891			0	Level Not Defined	Never Assessed this F	FALSE	waiting	0	0	0	0	0	0	0				
273688			40	LAS (ABE L5)	Assessed 2+ this FY	FALSE	active	1	1	0	0	0	0	0				
275026			5	Level Not Defined	Never Assessed this F	FALSE	prospective	0	0	0	0	0	0	0				
275161			82	High Int ESL (ESL L5)	Assessed 2+ this FY	FALSE	active	1	1	0	0	0	0	0				
277539			0	Level Not Defined	Never Assessed this F	FALSE	prospective	0	0	0	0	0	0	0				
277922			0	Level Not Defined	Never Assessed this F	FALSE	waiting	0	0	0	0	0	0	0				
278948			0	Level Not Defined	Never Assessed this F	FALSE	waiting	0	0	0	0	0	0	0				
281106			4	Level Not Defined	Never Assessed this F	FALSE	prospective	0	0	0	0	0	0	0				
281205			25	Adv ESL (ESL L6)	Assessed once this F	FALSE	active	1	0	0	0	0	0	0				
281669			16	Low Beg ESL (ESL L2)	Assessed once this F	FALSE	active	1	0	0	0	0	0	0				
284651			89	High Int ESL (ESL L5)	Assessed 2+ this FY	TRUE	active	1	1	1	0	0	1	1				
284950			14	Beg Lit ABE (ABE L1)	Assessed once this F	FALSE	active	1	0	0	0	0	0	0				
285640			00	Beg ABE (ABE L2)	Assessed 2+ this FY	FALSE	active	1	1	0	0	0	0	0				
								16	12	3	1	1	4	3				
												Program Total MSG		25%	19%			

MSG By Educational Functioning Levels				Program
EFL	# MSG	Enrolled	MSG	Negotiated MSG
Beg Lit ABE (ABE L1)	0	2	0%	19%
Beg ABE (ABE L2)	0	1	0%	30%
Low Int ABE (ABE L3)	2	5	40%	39%
High Int ABE (ABE L4)	0	0	0%	40%
LAS (ABE L5)	0	2	0%	35%
HAS (ABE L6)	1	1	100%	
Beg Lit ESL (ESL L1)	0	0	0%	40%
Low Beg ESL (ESL L2)	0	1	0%	30%
High Beg ESL (ESL L3)	0	1	0%	45%
Low Int ESL (ESL L4)	0	0	0%	37%
High Int ESL (ESL L5)	1	2	50%	32%
Adv ESL (ESL L6)	0	1	0%	22%
Level Not Defined		10		

This program's total MSG is at 25%, and when excluding the post sec and sec diploma is 19%. The program needs to work to increase Measurable Skills Gain considerably for the program year to achieve the 36%.

Please note the data has been altered from the LACES screenshots to produce values in the MSG calculations.