



- Overview of Federal and State Funding Models
- Measurable Skills Gains
- Participant Attendance Hours
- Participant Post-Test Rates
- Participant Status Attainment

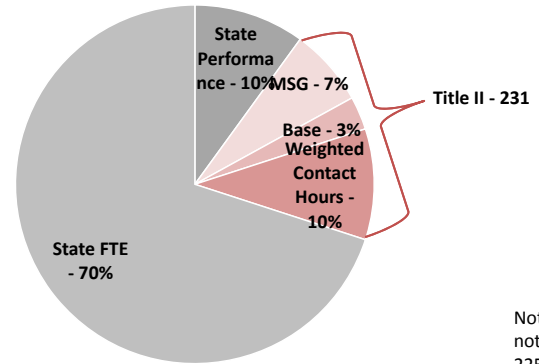
Performance Partnership Webinar  
November 1, 2018

**Bill Schneider**  
Associate Vice President  
Research and Performance Management  
North Carolina Community College System

**Dr. Ashley Sieman**  
Director of Program Evaluation  
North Carolina Community College System



## 2019-20 Approximate Funding Distribution Colleges



Note: Does not include 225 and 243



## Weighted Contact Hours Title II



- 50% of Title II 231 Funding
- Based on participant contact hour tier points
- 3 Tiers

Tier A - Weight 5	Tire B - Weight 4	Tier C - Weight 3
<ul style="list-style-type: none"> <li>• Beginning Adult Basic Ed Literacy</li> <li>• Beginning Adult Basic Ed</li> <li>• Beginning ESL Literacy</li> <li>• Beginning ESL</li> </ul>	<ul style="list-style-type: none"> <li>• Low Intermediate ESL</li> <li>• High Intermediate ESL</li> <li>• Low Advanced ESL</li> <li>• High Advanced ESL</li> <li>• Low Intermediate Adult Basic Ed</li> <li>• High Intermediate Adult Basic Ed</li> </ul>	<ul style="list-style-type: none"> <li>• Adult Secondary Ed Low</li> <li>• Adult Secondary Ed High</li> </ul>



## Base Title II



- 15% of Title II 231 Funding
- Equal allocation amount that is distributed across providers



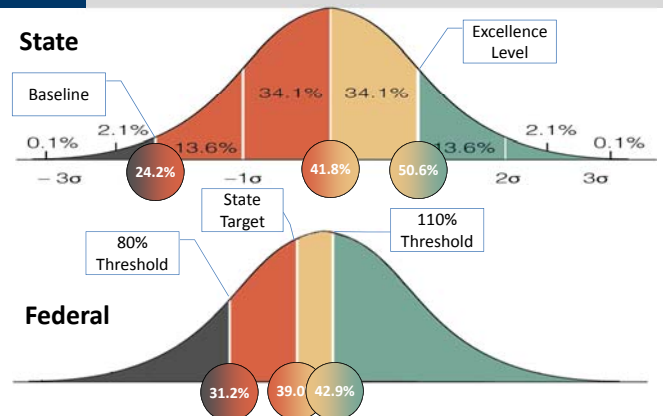
## Performance Funding



- Measurables Skills Gains (MSG)
- 35% of Title II 231 Funding
- \$6 million State Funding (2019-20)
- Measure consistent for state and federal performance funding
- Levels of success differ for state and federal performance funding
- Models similar for state and federal performance funding
  - Quality - Allocation associated with success rate
  - Impact - Allocation associated with number of successes
  - Provider Potential Allocation - MSG funding pool multiplied by provider's share of POPs in the denominator



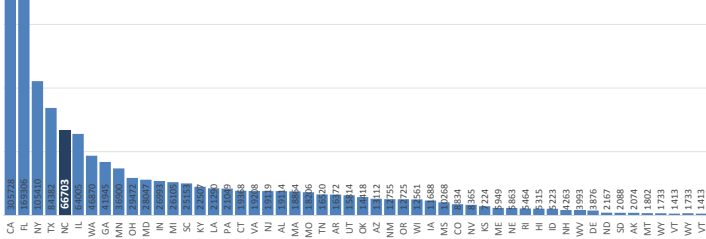
## 2019 MSG Levels of Success





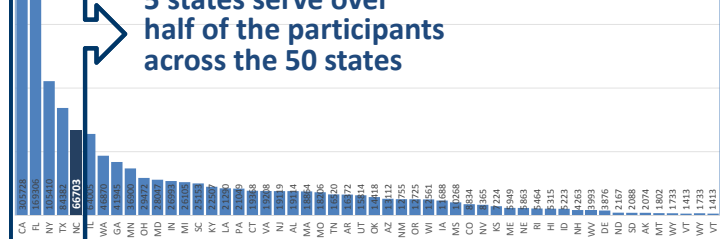
## Basic Skills Participants (12+ attendance hours) 2016-17 NRS

Over 1.4 Million Individuals across 50 states



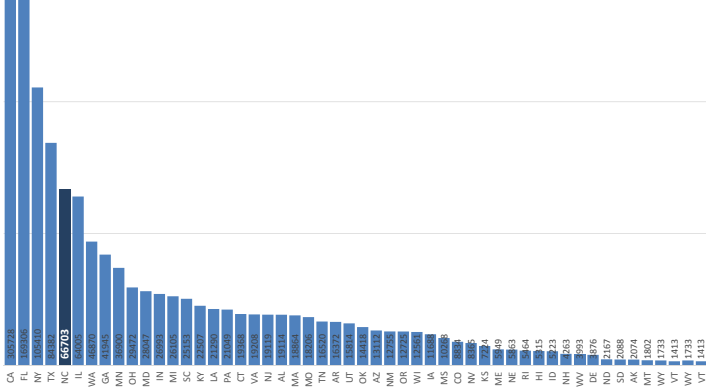
## Basic Skills Participants (12+ attendance hours) 2016-17 NRS

5 states serve over half of the participants across the 50 states



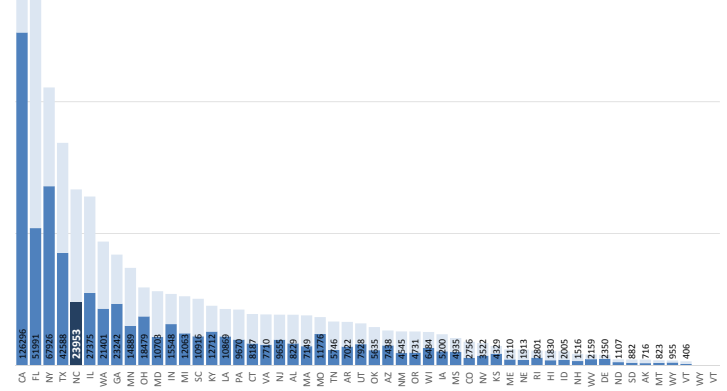
## Basic Skills Participants (12+ attendance hours) 2016-17 NRS

Note: CA and FL Cut-Off

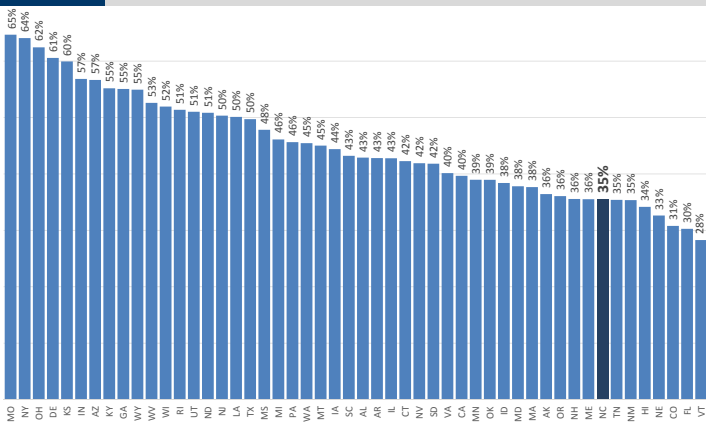


## Participants with a Measurable Skills Gain (MSG) 2016-17 NRS

Note: CA and FL Cut-Off



## Measurable Skills Gains (MSG) Percentage of Basic Skills participant periods of participation (POP) with a measurable skill gain (2016-17 NRS)



## Measurable Skills Gains (MSG) Percentage of Basic Skills participant periods of participation (POP) with a measurable skill gain

**Denominator:** Number of periods of participation during the Basic Skills program year (July 1 to June 30). A period of participation begins each time an individual enters adult education and gets at least 12 hours of service, even if there are multiple entries during the same program year. If an individual has a gap in service of more than 90 days, and returns during the same program year, a new period of participation is established.

**Numerator:** Based on the denominator, number of periods of participation in which at least one measurable skill gain was achieved.



### Measurable Skills Gains (MSG)

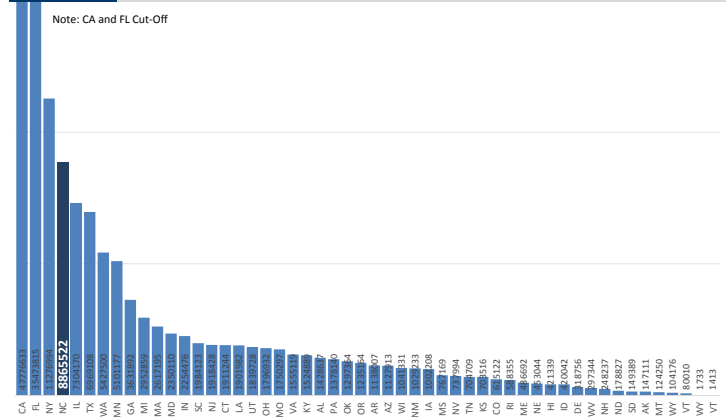
Percentage of Basic Skills participant periods of participation (POP) with a measurable skill gain

#### Measurable skill gains include:

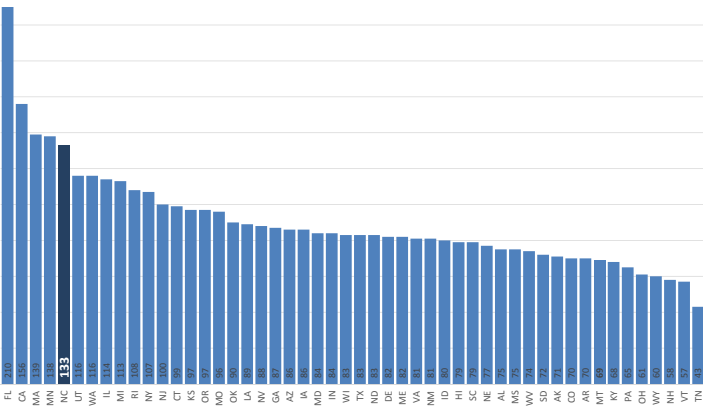
- **Pre and Post-tested:** Scored high enough on a post-test to place into a higher educational functioning level within the POP.
- **Adult High School Credit:** Entered the program year with less than 75% of required AHS credits and obtained enough AHS credits to exceed the 75% threshold during the program year.
- **Secondary school diploma or its equivalent:** Attainment of a secondary school diploma or other high school equivalency during the program year.
- **Post-Secondary Enrollment:** Exited the program and subsequently enrolled in post-secondary education during the program year.



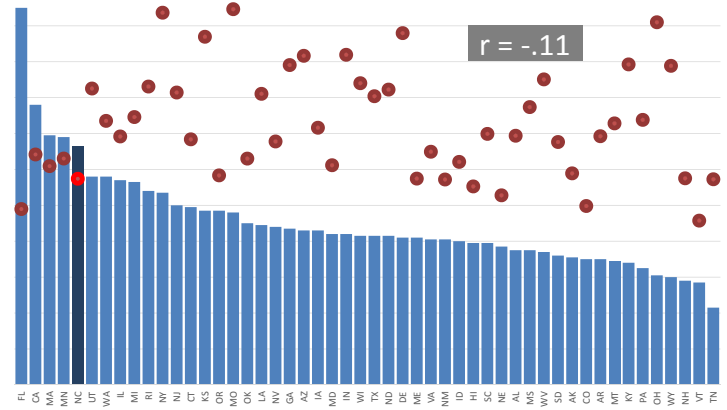
### Participant Attendance Hours 2016-17 NRS



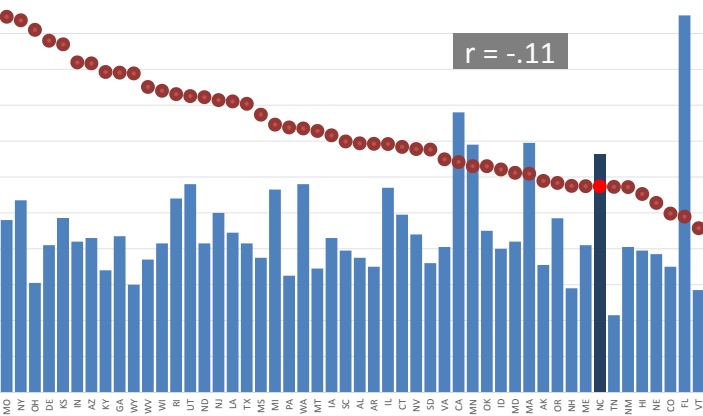
### Average Attendance Hours Per Participant 2016-17 NRS



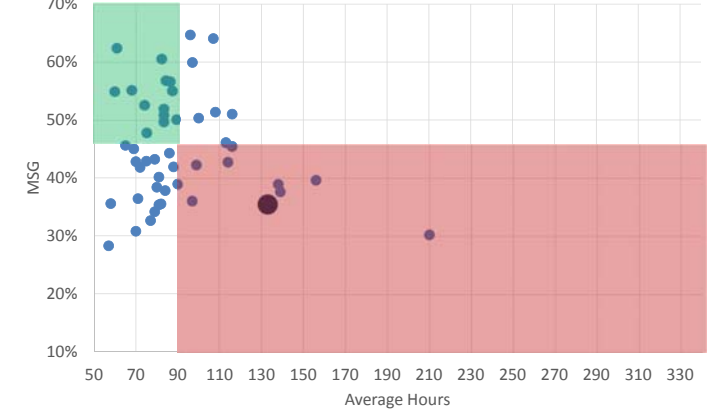
### Average Attendance Hours Per Participant Compared to Measurable Skills Gains 2016-17 NRS



### Average Attendance Hours Per Participant Compared to Measurable Skills Gains 2016-17 NRS



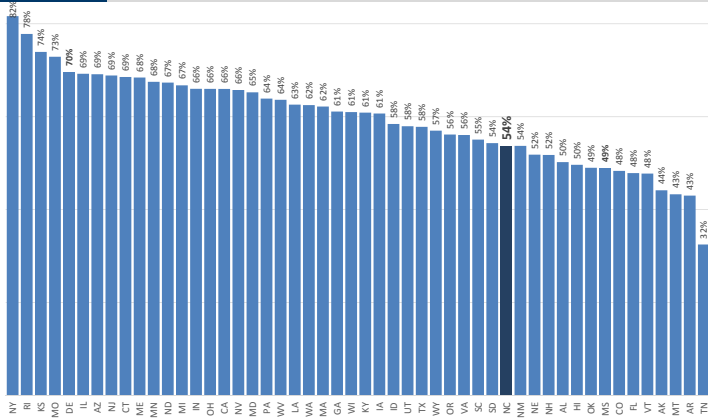
### Average Attendance Hours Per Participant Compared to Measurable Skills Gains States, 2016-17





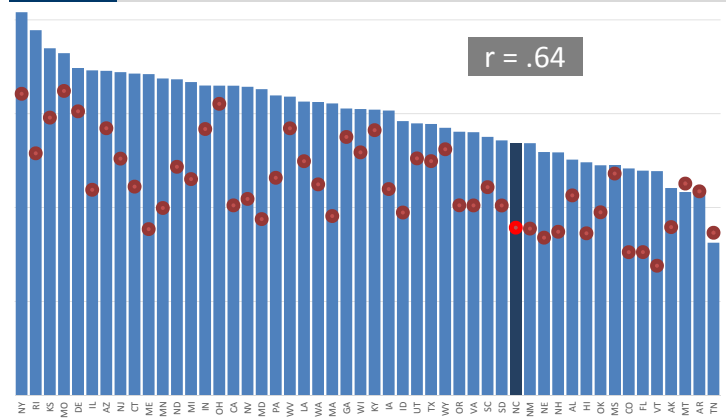
### Participant Post-Test Rate

Excluding Adult Secondary High  
2016-17 NRS



### Participant Post-Test Rate Compared to Measurable Skills Gains

Excluding Adult Secondary High  
2016-17 NRS



### Participant Distribution Measurable Skills Gains Attendance Hours Per Participant Participant Post-Test Rates

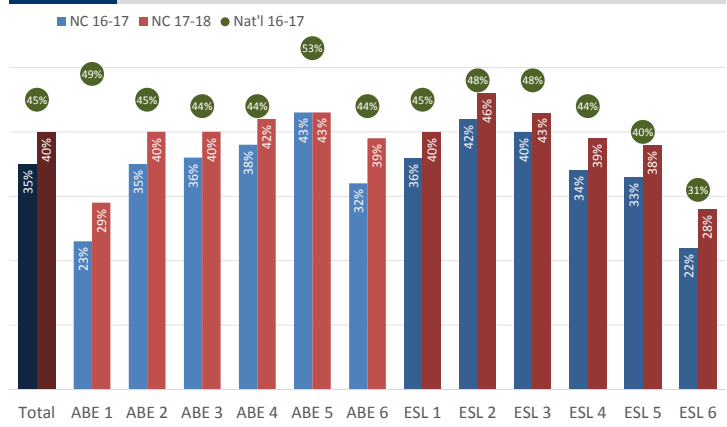
2016-17 NRS

	Participant Distribution		Measurable Skills Gains		Average Attendance Hours		Post-Test Rate					
	Nat'l	NC	Nat'l	NC	Nat'l	NC	Nat'l	NC	Change			
<b>Total</b>			45%	35%	-9%	90	133	47%	62%	54%	-8%	
<b>ABE Total</b>	62%	67%	5%	45%	36%	-9%	88	142	61%	57%	53%	-4%
ABE Level 1	2%	5%	3%	49%	23%	-26%	105	359	240%	59%	63%	4%
ABE Level 2	10%	8%	-2%	45%	35%	-10%	100	187	87%	59%	57%	-2%
ABE Level 3	18%	18%	1%	44%	36%	-7%	93	128	38%	58%	51%	-7%
ABE Level 4	20%	19%	-1%	44%	38%	-6%	82	113	37%	57%	53%	-4%
ABE Level 5	8%	10%	3%	53%	43%	-10%	75	103	38%	54%	48%	-6%
ABE Level 6	5%	6%	1%	44%	32%	-12%	66	97	46%			
<b>ESL Total</b>	38%	33%	-5%	43%	34%	-8%	94	115	23%	66%	55%	-11%
ESL Level 1	7%	3%	-4%	45%	36%	-8%	93	115	23%	66%	51%	-15%
ESL Level 2	6%	4%	-2%	48%	42%	-6%	92	111	21%	65%	54%	-11%
ESL Level 3	7%	6%	-1%	48%	40%	-9%	94	104	11%	65%	54%	-11%
ESL Level 4	8%	7%	0%	44%	34%	-10%	95	115	21%	67%	56%	-11%
ESL Level 5	6%	7%	1%	40%	33%	-7%	96	124	29%	68%	56%	-12%
ESL Level 6	4%	6%	2%	31%	22%	-8%	91	120	32%	67%	55%	-12%

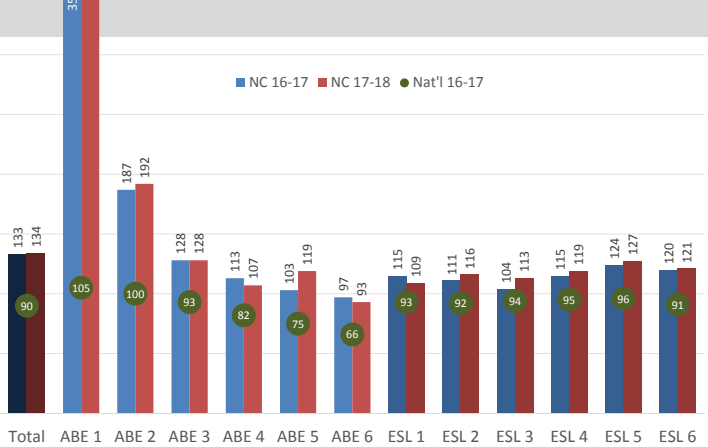


### Measurable Skills Gains (MSG)

Percentage of Basic Skills participant periods of participation (POP) with a measurable skill gain

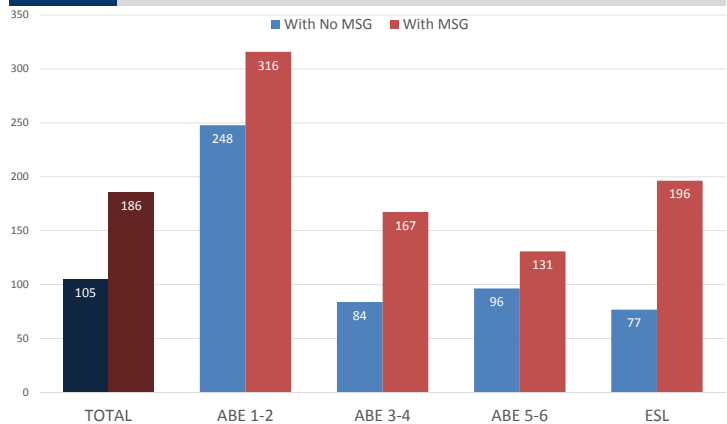


### Average Attendance Hours Per Participant



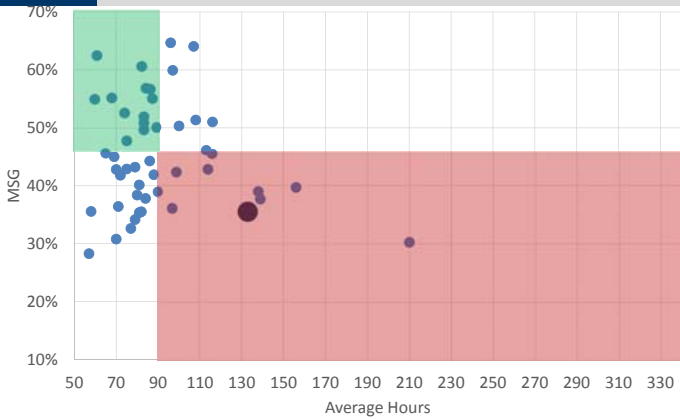
### Average Attendance Hours by MSG Attainment

2017-18

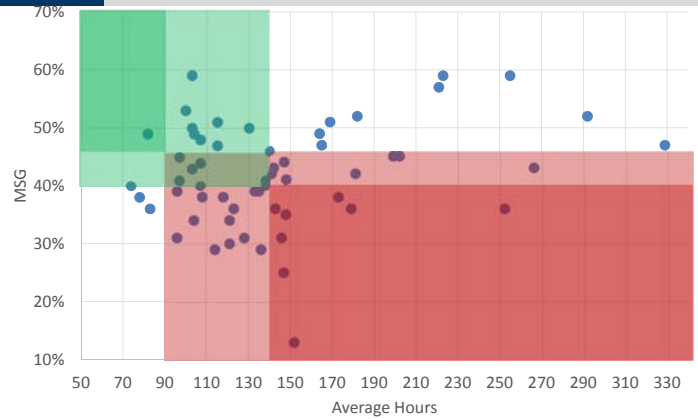




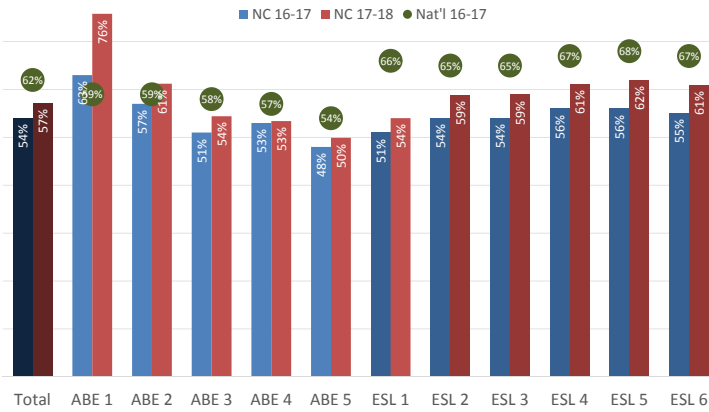
### Average Attendance Hours Per Participant Compared to Measurable Skills Gains States, 2016-17



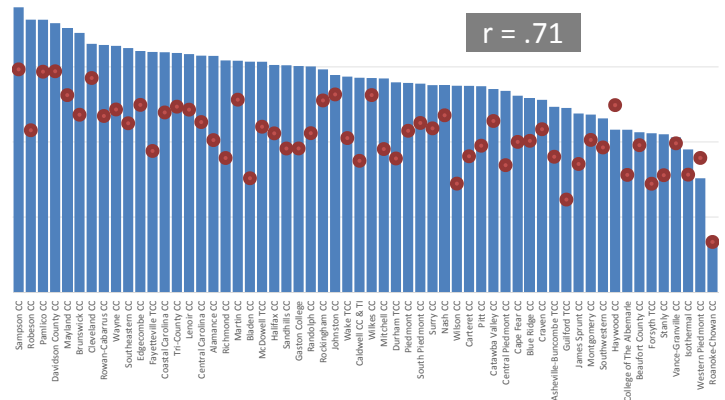
### Average Attendance Hours Per Participant Compared to Measurable Skills Gains NC Community Colleges, 2017-18



### Participant Post-Test Rate Excluding Adult Secondary High



### Participant Post-Test Rate Compared to Measurable Skills Gains Excluding Adult Secondary High 2017-18



### Participant Status Attainment (Retention) 12+ Attendance Hours



### Questions?